

[ABOUT US](#)[UPCOMING EVENTS](#)[WAYS TO GIVE](#)

Photo Credit: Eastside Fire & Rescue Fire Corps UAS Program (John Bromberg)

January Newsletter

Welcome to 2024! We hope you all had a wonderful holiday season and that your new year is off to a happy start. FLSSP started our 2024 with a SPLASH hosting our largest Polar Plunge to date – thank you for joining us to kick off the new year!

We are looking forward to building on our past successes in 2024. This year FLSSP will offer our community increased opportunities to enjoy a fun day at the park with more frequent small events, monthly volunteer restoration opportunities, and continuing our larger signature events in the off- season. We are also working to improve our communications channels and build our funding to support needed park improvements. There is much to accomplish as we continue our mission to support, enhance and promote this wonderful community asset – Lake Sammamish State Park! We are thrilled and so grateful you are joining us on this journey in 2024; with your help we can continue to make Lake Sammamish State Park a model park for our urban community.

Warmly,

Jayme Jonas



FLSSP kicks off the New Year with a Splash

Thank you to those that joined FLSSP and state park staff at Lake Sammamish State Park for chowder, donuts, coffee, first day hikes, and of course a cold dip in the lake! It was FLSSP's largest Polar Plunge to date hosting more than 400 plungers and well over 500 guests, so we sure did make a splash!

Thank you to our incredible sponsors - Banner



Bank and Virginia Mason Franciscan Health - for their support; Ivar's Acres of Clams for donating and serving hot chowder to keep our plungers warm and providing coupons for more; Starbucks Issaquah Meadows and Krispy Kreme Issaquah for donating coffee, hot water, and donuts; Eastside Fire and Rescue for being on hand to ensure everyone was safe and taking some great drone footage; and our partner, Washington State Parks & Recreation Commission for additional snacks and the fun and educational First Day Hikes!

We are starting to plan our next signature event, Walk n Wag, for Saturday, May 4. To all our dog owners, dog walkers, dog lovers, and park supporters, mark your calendars now because it's sure to be a paw-sitive experience!

Join FLSSP Feb 17 for Our First Restoration Event of the Year

FLSSP will be hosting our first restoration event of 2024 on Saturday, February 17 from 10 am – noon. We will be continuing work on the Tibbetts creek site putting up cages to help protect our 90+ newly planted trees, continuing to monitor and pull invasive plants, mulching and putting in more plants.



Please [register here](#) to join us as we kick off our monthly restoration events for 2024 and help our park thrive!



FLSSP Winter Photo Contest

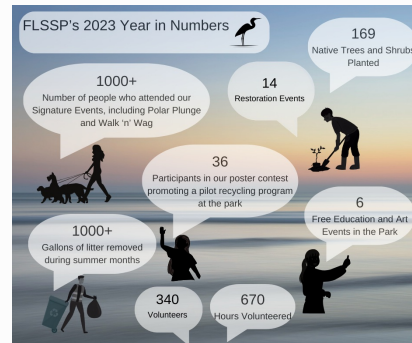
It might seem dreary and cold outside, but some of the best photo images of Lake Sammamish State Park can be a winter scene, so consider coming down to the park and capturing it in its winter state. FLSSP is hosting our winter photo contest so enter those [wonderful photos here](#) for a chance to win a Discover Pass. The winter photo contest opens January 15 and will run through March 15, 2024.

FLSSP and Our Community Accomplishments of 2023

FLSSP is incredibly proud of our community's collective accomplishments at Lake Sammamish State Park in 2023. We wanted to share with you a brief overview of some of our work last year. In 2023, with the help of our community, FLSSP began

to restore over 2 acres of public park lands, cleaned up over 1000 gallons of litter over the summer months with our partners, hosted over 65 families at Camp S'more –79% of whom were first time campers, and began development of new and improved trails access. We could not do this without the help of our community who donated well over 670 volunteer hours to our park in 2023. We are so grateful to our community for your support and love for public lands.

Thank you!



FLSSP Welcomes Grace Whitten to the Board

FLSSP is excited to welcome Grace Whitten to our Board of Directors! Grace is an Issaquah local with a passion for the outdoors and community-building activities. She is excited to work alongside and learn from fellow board members, and looks forward to using her organizational skills to help establish new templates for the facilitation and coordination of events. She takes special interest in projects related to animals, conservation, and engaging people to get outside. Grace will be serving as our FLSSP Event Committee Chair and we are so excited to have her join us as we move into 2024!

A New Year with New Ways to Give!

FLSSP is a small nonprofit looking to make a big impact in our community through ensuring that Lake Sammamish State Park continues to thrive as an urban park oasis. Your donation goes to supporting park programming; maintaining and improving trail access for all; supporting maintenance of the playgrounds and play structures; helping support a resilient, climate-smart landscape through restoration; and working with our community to improve access to parks. Your generosity in this new year is more than a donation; it is an investment in the well-being and vibrancy of our shared spaces. Please consider being one of the first to donate to FLSSP in 2024.



We can now accept a donation of appreciated stocks, bonds and mutual funds. To learn more about this new way to give please contact FLSSP Executive Director, Jessica Schafer, at director@flssp.org or you can donate the traditional way online [here](#). Your donation makes a lasting contribution to the health and well-being of our community in 2024!



Park News

Become a WA State Park Host

Park hosts help State Parks connect communities to their public lands. Consider helping state parks by becoming a state park host today. You can review the requirements and get more information on how to become a state park host [here](#).

Want to Consider Camping in a WA State Park?

From Camp S'more to campgrounds - now is the time to look for those coveted summer reservations at our Washington State Park campgrounds. To get out and camp on our Washington public lands, you can check out the Washington State Park reservation page [here](#).

Upcoming Partner Events



January 27th, 9am to noon:

Join Mountains to Sound Greenway Trust for a Nursery clean up at Lake Sammamish State Park

[Register Here](#)



FLSSP Partner Event

January 27th, 9am to 1pm:

Get an action-packed tour of the geology of Tiger Mountain in the seldom visited Grand Canyon of Fifteenmile Creek led by UW geologist, Dr. Will Hoover! On this 4.5-mile hike, you will learn about the uplift of the Issaquah Alps, local faults and how we track their



Jan 22nd, 8am to 11am

Join Eastside Audubon for its monthly bird walk at Lake Sammamish State Park.

[Learn More Here](#)

activity, the ancient environment that produced the rocks of Tiger Mountain, and local coal mining and its environmental legacy. This is an interactive hike with hands-on observations, discussion and Q&A.

[Register Here](#)



Contact Us
operations@flssp.org



Friends of Lake Sammamish State Park | PO Box 605, Issaquah, WA 98027

[Unsubscribe](#) president@flssp.org

[Update Profile](#) | [Constant Contact Data Notice](#)

Sent by operations@flssp.org powered by



Try email marketing for free today!